



Containers, pretty much one of the symbols of the construction sector, are used to provide for various needs , because of their features of fast assembly, floor framed structure and multiple use. Leading the way are construction site mobilisations. Office, dining hall, dormitory, wc-shower containers, needed in setting up a construction site are some exemples .

Aside from this , containers wholly produced in factory environment, are also essential products of immediate settlement requirements.

The containers, we produce with weldless production technology, can be manufactured as one storey, two storey and three storey, according to its place and intention of use.

Painted galvanized steel sheet or A-1 class non combustible cementboard brand plates, produced with fiber cement technology are used in accordance with our clients preference.

Aside from our standard sizes of 3,0 x 7,0 and 2,4 x 6,0 ; (3,0x6,0) ; special sized container production is also performed , according to the demand of our customers.



GTC - Building Structural Containers

Unlimited Efficient affordable Solutions

* Gtc offer a full line from **2,4x6** and **3x7** m containers , each available in **15** different versions.

* 2,4 x 6,0 x 2,60 (lxwxh ; outside dimensions)

* 3,0 x 7,0 x 2,60

* All containers can be connected with each other :

*

unlimited

* Lenght

* Widht

* up to 3 stages Height

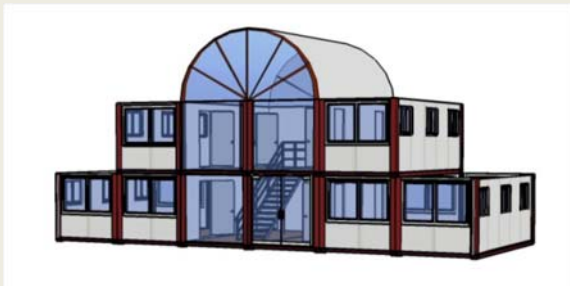
* Colour : standard Blue but all available

* Unlimited different assemblies , following demand

* Standard made in Flatpack for easy transport (10pieces-6m / 8 pieces-7m in 40feetHq)

* all steel heavy galvanised for long life

* easy mountable with crane eyes



offices
 sleeping dormitories
 housing
 building storage
 gardenhouse
 garage
 toilets
 storage
 schools



Call or Mail us for any information

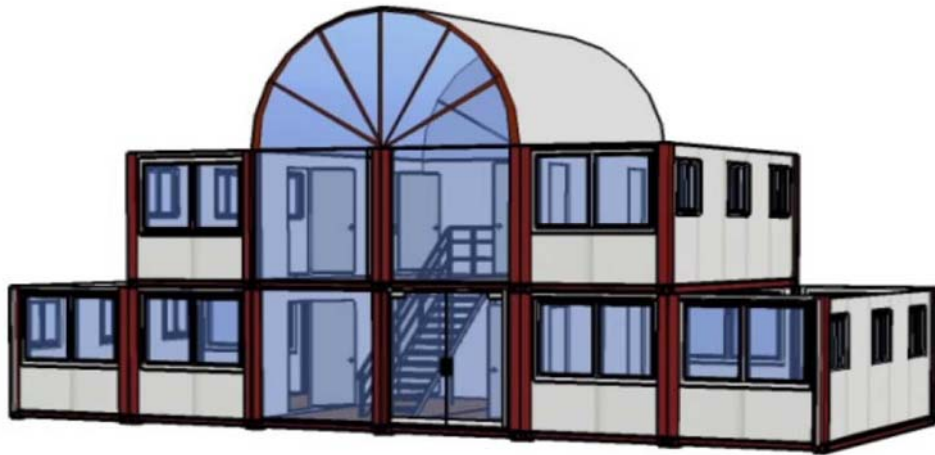


10 x Flatpack



Gtc (a mic division) Wachtebeke Belgium tel:+32 9 348 48 48 fax:+32 9 348 95 16 Email: info@generaltents.com

G.T.C. Dedicated Corporate Offices,



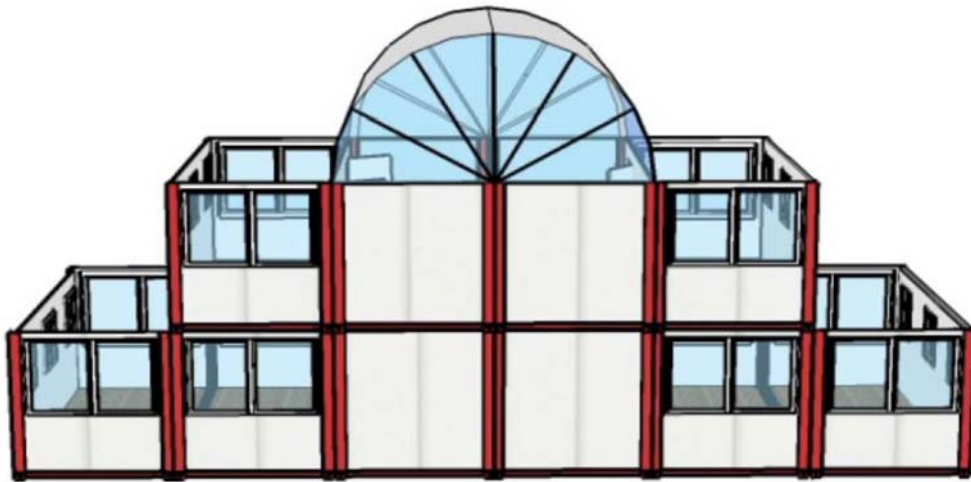
Front side,

In total 10 containers, can be a : 2,4x6 or b : 3x7

total office space : a: 86 m² b: 126 m²

entry: a: 29 m² b: 42 m²

additional possibilities: large windows, stairs , toilets,



Flexible and Portable , Ecological , Modular, Sustainable, Safe , Aesthetic, Economic



Kitchen assembly



Dormitory assembly



Toilet executions



Office and factory entrance unit



Easy container home for recreational or permanent use



House Living unit , with optional stairs and front walk assembly .



Standard L- office or housing configuration .



Special large execution container (3 x 9)



Store Unit container



Simple Container living unit



Garden House



Harbour House



standard basic 2-storey configuration



Factory Guard container entry unit



Foldable Container Unit ,

Recently , we developed 3 type of foldable containers , which can be operated in 10 minutes time.
Possibilities: exhibitions , building warf, markets, etc;

G.T.C. Building

Your flexible building partner

www.generaltents.com